



# Retail Space For Lease

1436 Polk Street | Nob Hill



**Andrew Kraft**  
415.233.2142  
akraft@blatteisrealty.com  
DRE #02019054



# Size: ±3,500 Square Feet

## Price: \$9,500/Month

### Between California & Pine Streets

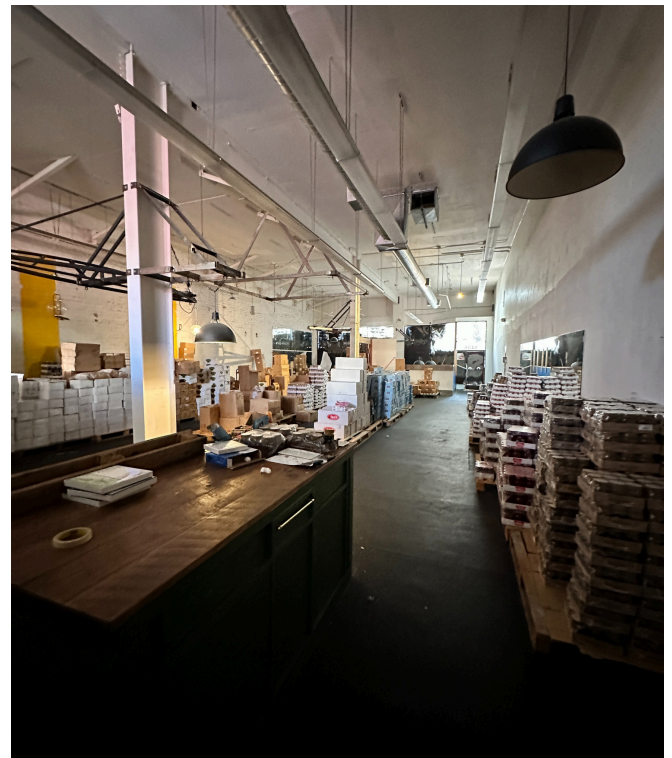
Previously a boxing gym, this prime space is located on the vibrant Polk Street, one of San Francisco's most bustling commercial streets, it attracts a diverse clientele, making it an ideal hub for retailers, boutique shops, restaurants, and more.

## Highlights:

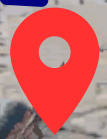
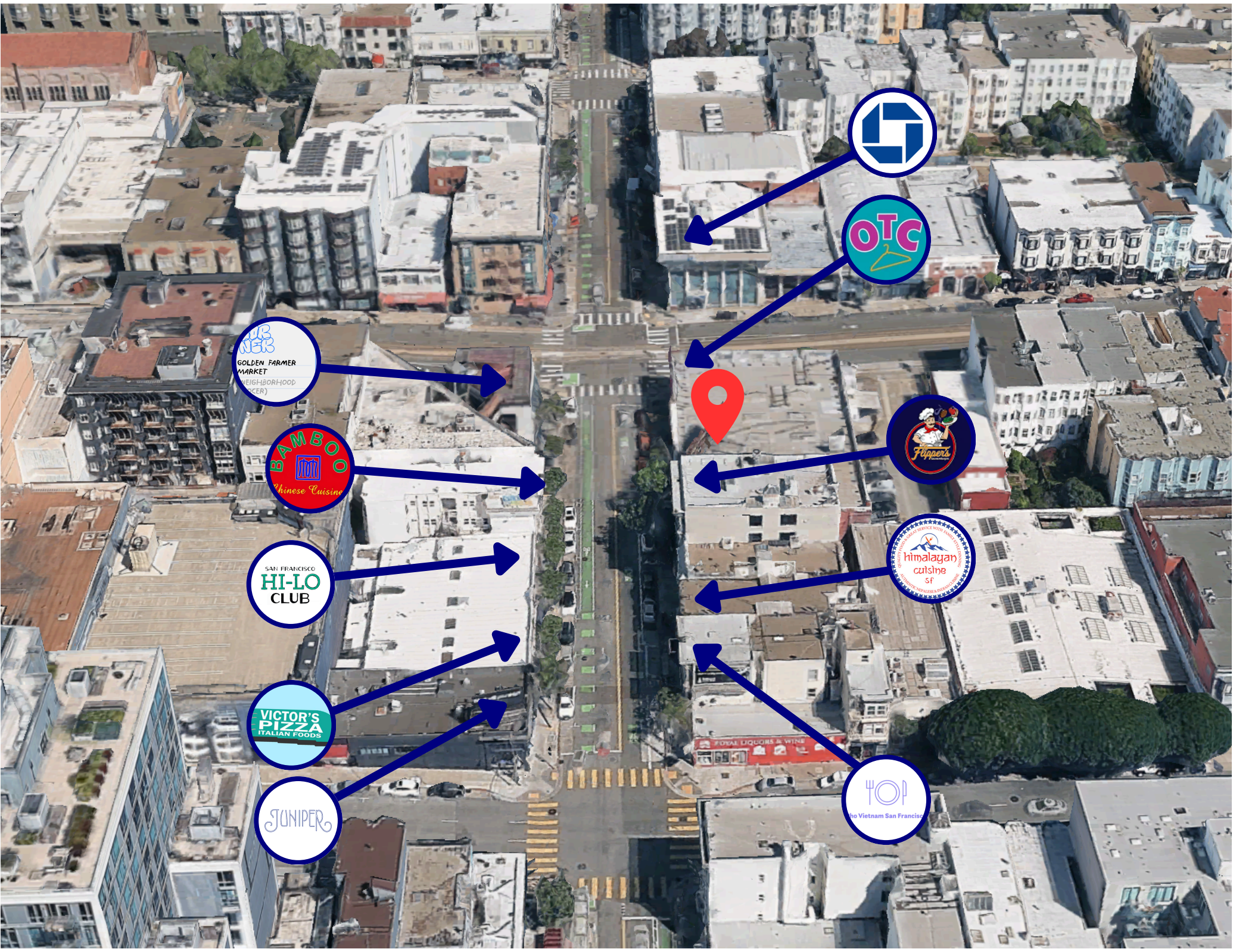
- Large open floorplan offers a versatile layout
- High Ceilings
- Suitable for various uses
- Excellent blade signage opportunity
- ±200 Sq Ft Mezzanine
- WALK SCORE® 100 (Walker's Paradise)
- TRANSIT SCORE® 87 (Excellent Transit)
- Nearby tenants include Golden Farmer Market, Bamboo Restaurant, Out of the Closet, Flippers Gourmet Burgers, and more















**1436 Polk Street**  
**San Francisco, CA 94109**  
**Nob Hill**

**Andrew Kraft**  
**415.233.2142**  
**akraft@blatteisrealty.com**  
**DRE #02019054**



This Statement with the information it contains is given with the understanding that all negotiations relating to the purchase, renting or leasing of the property described above shall be conducted through Blatteis Realty Company. The above information, while not guaranteed, has been secured from sources believed to be reliable. Blatteis Realty has not verified its accuracy and make no guarantees, warranty or representation regarding this information and it is published subject to the possibility of errors, omissions, changes of listing information including price, term, financing, or withdrawal without notice. We include projections, estimates, opinions and/or assumptions, for example only, and they may not represent current or future performance of the property. You should consult your tax and legal advisors before to verify the validity of estimates. All commercial or mixed-use property presented by Blatteis Realty is subject to local zoning codes and regulations. It is the sole responsibility and liability of tenants and property owners to obtain all applicable required building permits and/or certificates from the local city/town Planning Department before commercial property use can commence or a building can be built.

101 Montgomery Suite 888, San Francisco, CA 94104 | t: 415.981.2844 | f: 415.981.4986 | info@brsf.co | DRE #01421282