

FOR LEASE

1639-1653 Polk Street San Francisco



Dynamic Polk Street Retail!

±2,500 SF

Please Call for Price

This Space is also Divisible.

CONTACT **Jeremy Blatteis** 415-321-7493 | jfb@brsf.co | BRE#:01460566
Jonathan Blatteis 415-321-7486 | jb@brsf.co | BRE#:00812015

BLATTEIS REALTY CO. 44 Montgomery Street, Ste. 1288 | t: 415-981-2844 | f: 415-981-4986 | info@brsf.co | BRE#: 01421282 | www.sfretail.net

This statement with the information it contains, is given with the understanding that all negotiations relating to the purchase, renting or leasing of the property described above shall be conducted through this office. The above information, while not guaranteed, has been secured from sources believed to be reliable. We have not verified its accuracy and make no guarantee, warranty or representation regarding this information and it is published subject to the possibility of errors, omissions, changing of listing information including price, term, financing, or withdrawal without notice. We include projections, estimates, opinions, and/or assumptions, for example only, and they may not represent current or future performance of the property. You should consult your tax and legal advisors before to verify the validity of our estimates.



1639-1653 POLK STREET, SAN FRANCISCO

INTERIOR



CONTACT **Jeremy Blatteis** 415-321-7493 | jfb@brsf.co | BRE#:01460566
Jonathan Blatteis 415-321-7486 | jb@brsf.co | BRE#:00812015

BLATTEIS REALTY CO. 44 Montgomery Street, Ste. 1288 | t: 415-981-2844 | f: 415-981-4986 | info@brsf.co | BRE#: 01421282 | www.sfretail.net

This statement with the information it contains, is given with the understanding that all negotiations relating to the purchase, renting or leasing of the property described above shall be conducted through this office. The above information, while not guaranteed, has been secured from sources believed to be reliable. We have not verified its accuracy and make no guarantee, warranty or representation regarding this information and it is published subject to the possibility of errors, omissions, changing of listing information including price, term, financing, or withdrawal without notice. We include projections, estimates, opinions, and/or assumptions, for example only, and they may not represent current or future performance of the property. You should consult your tax and legal advisors before to verify the validity of our estimates.



1639-1653 POLK STREET, SAN FRANCISCO

INTERIOR



CONTACT **Jeremy Blatteis** 415-321-7493 | jfb@brsf.co | BRE#:01460566
Jonathan Blatteis 415-321-7486 | jb@brsf.co | BRE#:00812015

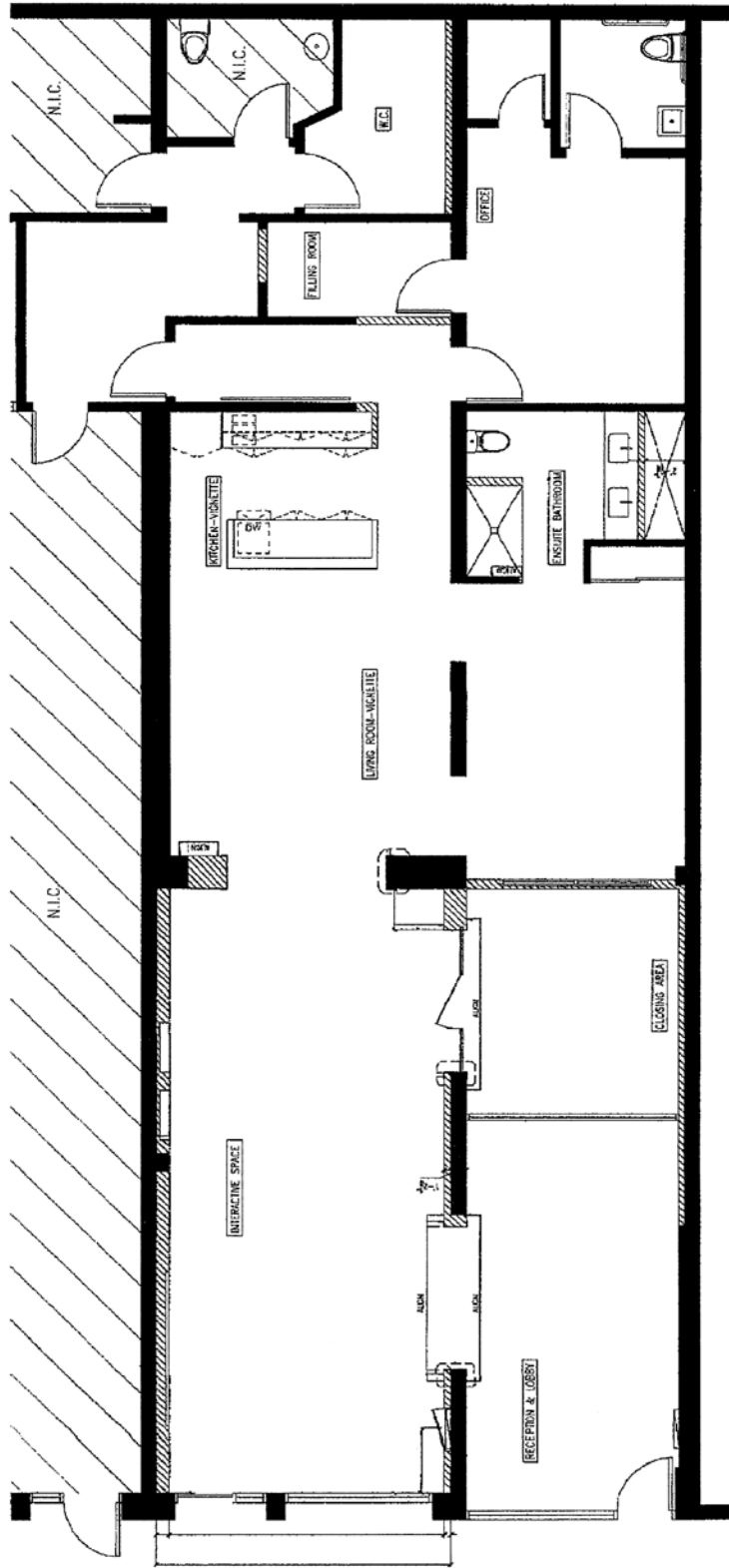
BLATTEIS REALTY CO. 44 Montgomery Street, Ste. 1288 | t: 415-981-2844 | f: 415-981-4986 | info@brsf.co | BRE#: 01421282 | www.sfretail.net

This statement with the information it contains, is given with the understanding that all negotiations relating to the purchase, renting or leasing of the property described above shall be conducted through this office. The above information, while not guaranteed, has been secured from sources believed to be reliable. We have not verified its accuracy and make no guarantee, warranty or representation regarding this information and it is published subject to the possibility of errors, omissions, changing of listing information including price, term, financing, or withdrawal without notice. We include projections, estimates, opinions, and/or assumptions, for example only, and they may not represent current or future performance of the property. You should consult your tax and legal advisors before to verify the validity of our estimates.



1639-1653 POLK STREET, SAN FRANCISCO

FLOOR-PLAN



CONTACT **Jeremy Blatteis** 415-321-7493 | jfb@brsf.co | BRE#:01460566
Jonathan Blatteis 415-321-7486 | jb@brsf.co | BRE#:00812015

BLATTEIS REALTY CO. 44 Montgomery Street, Ste. 1288 | t: 415-981-2844 | f: 415-981-4986 | info@brsf.co | BRE#: 01421282 | www.sfretail.net

This statement with the information it contains, is given with the understanding that all negotiations relating to the purchase, renting or leasing of the property described above shall be conducted through this office. The above information, while not guaranteed, has been secured from sources believed to be reliable. We have not verified its accuracy and make no guarantee, warranty or representation regarding this information and it is published subject to the possibility of errors, omissions, changing of listing information including price, term, financing, or withdrawal without notice. We include projections, estimates, opinions, and/or assumptions, for example only, and they may not represent current or future performance of the property. You should consult your tax and legal advisors before to verify the validity of our estimates.

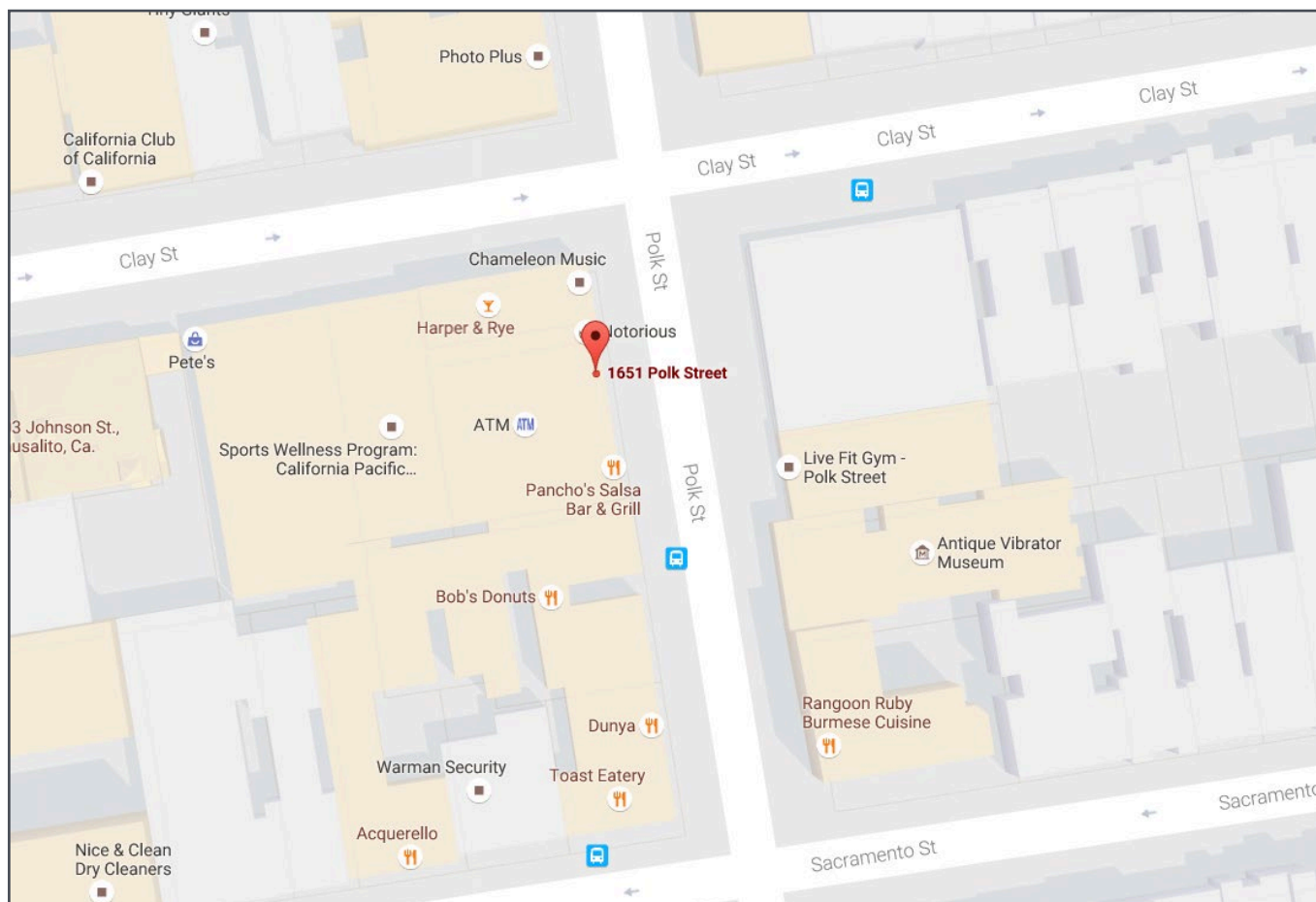


1639-1653 POLK STREET, SAN FRANCISCO

ABOUT

- Dynamic ground-floor retail location on Polk Street available now for lease
- Parking available at Old First Garage (on Sacramento near Polk) and on the street
- Strong amount of foot traffic
- Neighbors: Walgreens, Staples, Chase Bank, The Crepe House, and many other well-known national and local retailers
- ***This Space is also Divisible.***

MAP



CONTACT **Jeremy Blatteis** 415-321-7493 | jfb@brsf.co | BRE#:01460566
Jonathan Blatteis 415-321-7486 | jb@brsf.co | BRE#:00812015

BLATTEIS REALTY CO. 44 Montgomery Street, Ste. 1288 | t: 415-981-2844 | f: 415-981-4986 | info@brsf.co | BRE#: 01421282 | www.sfretail.net

This statement with the information it contains, is given with the understanding that all negotiations relating to the purchase, renting or leasing of the property described above shall be conducted through this office. The above information, while not guaranteed, has been secured from sources believed to be reliable. We have not verified its accuracy and make no guarantee, warranty or representation regarding this information and it is published subject to the possibility of errors, omissions, changing of listing information including price, term, financing, or withdrawal without notice. We include projections, estimates, opinions, and/or assumptions, for example only, and they may not represent current or future performance of the property. You should consult your tax and legal advisors before to verify the validity of our estimates.

