

FOR LEASE

# 1122 Howard Street San Francisco



## Retail/Office Space Available In SOMA

### ±9,500 SF

(±4,500 SF ground floor + ±4,500 SF 2nd floor)

### Please Call For Price

Available August 2017

**CONTACT** Kevin Velotta 415-321-7496 | kv@brsf.co | BRE#: 01945129  
Jeremy Blatteis 415-321-7496 | kv@brsf.co | BRE#: 01460566

BLATTEIS REALTY CO. 44 Montgomery Street, Ste. 1288 | t: 415-981-2844 | f: 415-981-4986 | info@brsf.co | BRE#: 01421282 | www.sfretil.net

This statement with the information it contains, is given with the understanding that all negotiations relating to the purchase, renting or leasing of the property described above shall be conducted through this office. The above information, while not guaranteed, has been secured from sources believed to be reliable. We have not verified its accuracy and make no guarantee, warranty or representation regarding this information and it is published subject to the possibility of errors, omissions, changing of listing information including price, term, financing, or withdrawal without notice. We include projections, estimates, opinions, and/or assumptions, for example only, and they may not represent current or future performance of the property. You should consult your tax and legal advisors before to verify the validity of our estimates.

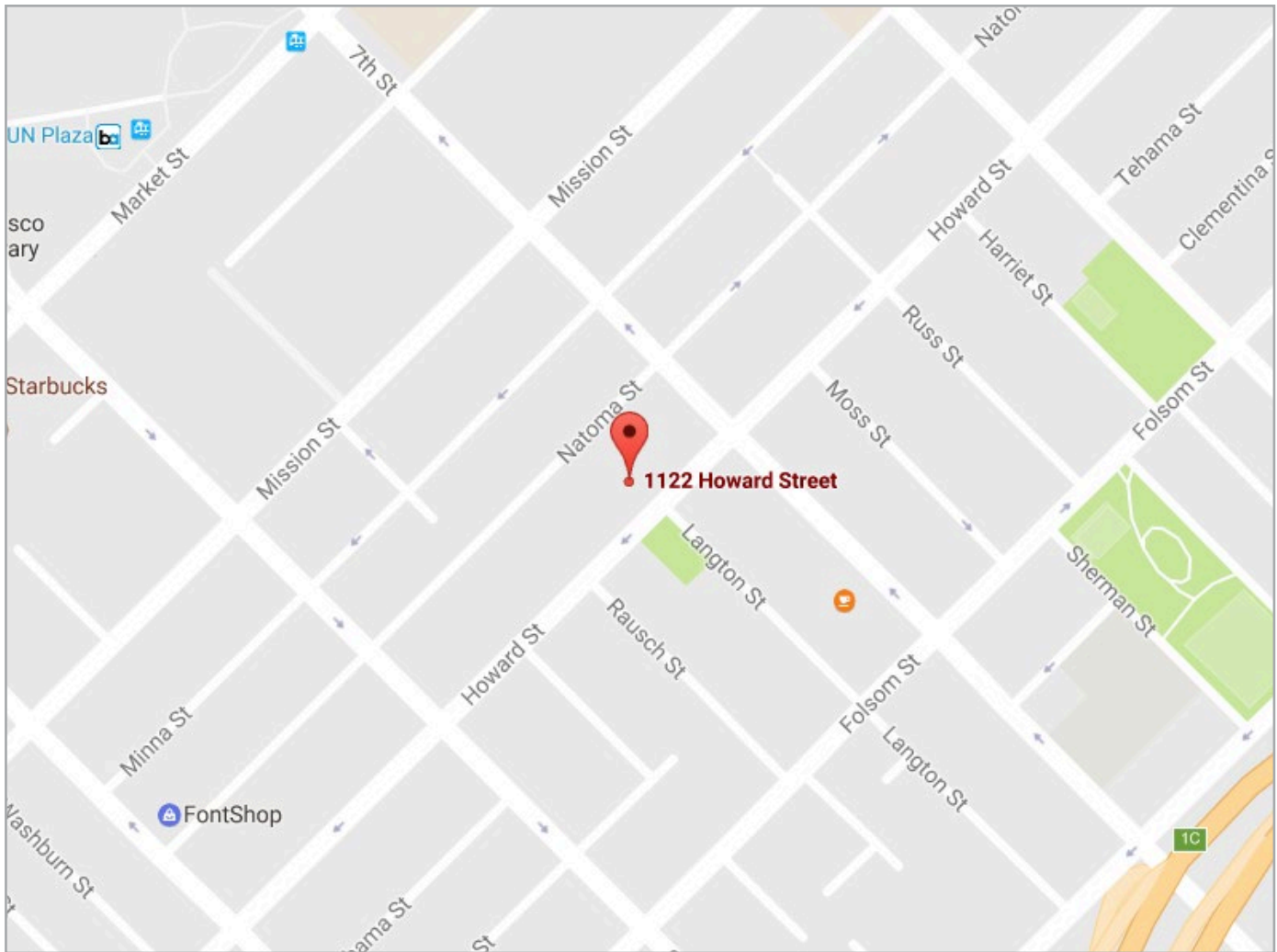


# 1122 HOWARD STREET, SAN FRANCISCO CA

## ABOUT

Approximately  $\pm 9,500$  square feet of retail/office space available now in the SOMA District.  
 $\pm 4,500$  SF on the ground floor &  $\pm 4,500$  SF on the 2nd floor.

## MAP



**CONTACT** **Kevin Velotta** 415-321-7496 | kv@brsf.co | BRE#: 01945129  
**Jeremy Blatteis** 415-321-7496 | kv@brsf.co | BRE#: 01460566

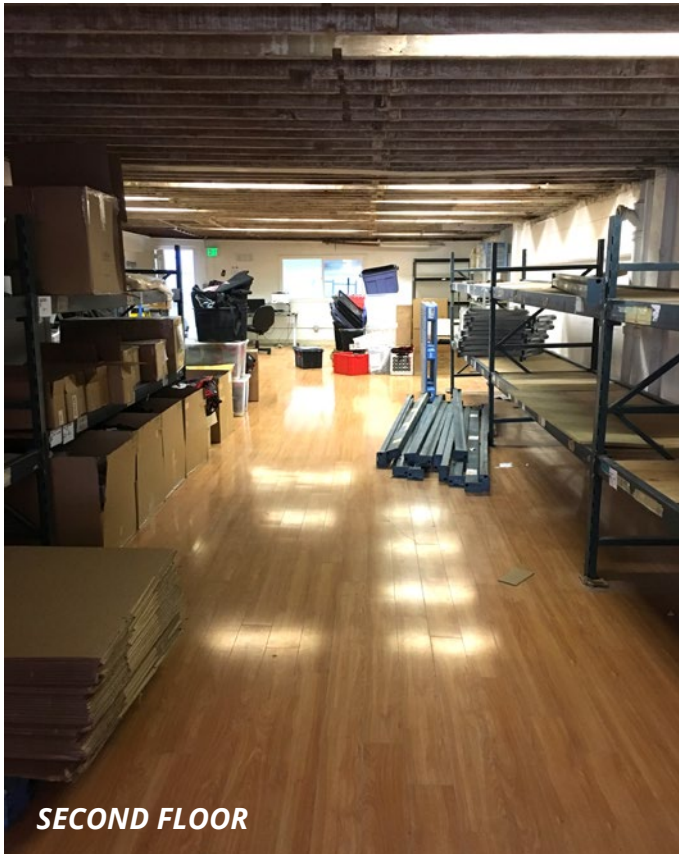
BLATTEIS REALTY CO. 44 Montgomery Street, Ste. 1288 | t: 415-981-2844 | f: 415-981-4986 | info@brsf.co | BRE#: 01421282 | www.sfretail.net

This statement with the information it contains, is given with the understanding that all negotiations relating to the purchase, renting or leasing of the property described above shall be conducted through this office. The above information, while not guaranteed, has been secured from sources believed to be reliable. We have not verified its accuracy and make no guarantee, warranty or representation regarding this information and it is published subject to the possibility of errors, omissions, changing of listing information including price, term, financing, or withdrawal without notice. We include projections, estimates, opinions, and/or assumptions, for example only, and they may not represent current or future performance of the property. You should consult your tax and legal advisors before to verify the validity of our estimates.

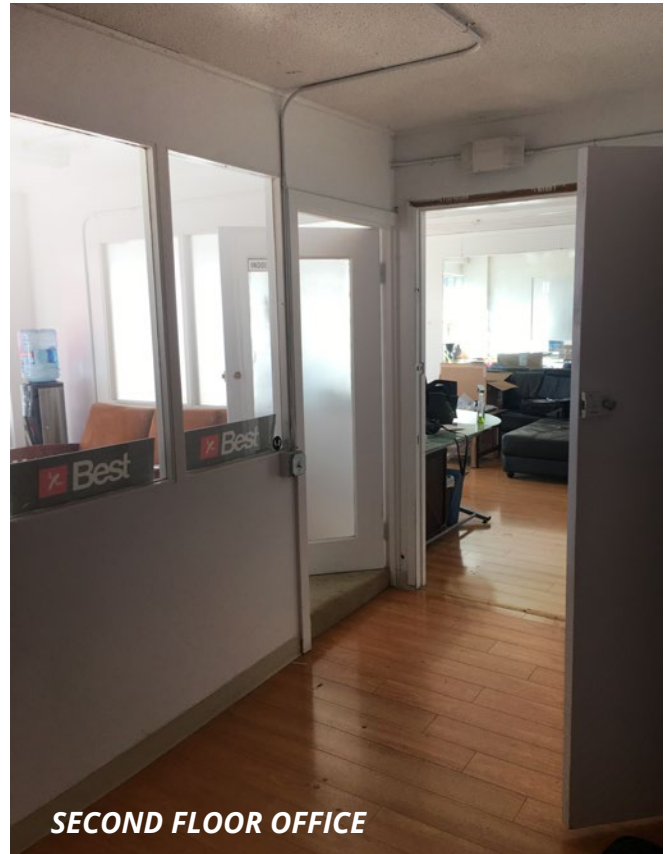




# 1122 HOWARD STREET, SAN FRANCISCO



**SECOND FLOOR**



**SECOND FLOOR OFFICE**



**GROUND FLOOR**

**CONTACT** **Kevin Velotta** 415-321-7496 | kv@brsf.co | BRE#: 01945129  
**Jeremy Blatteis** 415-321-7496 | kv@brsf.co | BRE#: 01460566

BLATTEIS REALTY CO. 44 Montgomery Street, Ste. 1288 | t: 415-981-2844 | f: 415-981-4986 | info@brsf.co | BRE#: 01421282 | www.sfretail.net

This statement with the information it contains, is given with the understanding that all negotiations relating to the purchase, renting or leasing of the property described above shall be conducted through this office. The above information, while not guaranteed, has been secured from sources believed to be reliable. We have not verified its accuracy and make no guarantee, warranty or representation regarding this information and it is published subject to the possibility of errors, omissions, changing of listing information including price, term, financing, or withdrawal without notice. We include projections, estimates, opinions, and/or assumptions, for example only, and they may not represent current or future performance of the property. You should consult your tax and legal advisors before to verify the validity of our estimates.

