



**PRIME UNION SQUARE  
OFFICE SPACES FOR LEASE**

**±2,540 SF**

Full Floors

+ Smaller Suites Available

**BEST BLOCK OF  
GEARY STREET!**

**DIRECTLY ACROSS FROM  
NEIMAN MARCUS  
& MACY'S!**

*Major Renovation Underway:  
Building to be completely  
revitalized with a tasteful  
& contemporary design.*

- > Unbeatable Location!
- > Spacious & Flexible Layouts
- > Lots of Natural Light
- > Gorgeous 360° views
- > HIGH ceilings
- > Brick interior walls possible
- > Excellent work letter for qualified tenants.
- > Full Building Potential

**8<sup>th</sup>, 9<sup>th</sup>, & 11<sup>th</sup> FLOORS  
AVAILABLE NOW!**

This statement with the information it contains, is given with the understanding that all negotiations relating to the purchase, renting or leasing of the property described above shall be conducted through this office. The above information, while not guaranteed, has been secured from sources believed to be reliable. We have not verified its accuracy and make no guarantee, warranty or representation regarding this information and it is published subject to the possibility of errors, omissions, changing of listing information including price, term, financing, or withdrawal without notice. We include projections, estimates, opinions, and/or assumptions, for example only, and they may not represent current or future performance of the property. You should consult your tax and legal advisors before to verify the validity of our estimates.

**SPECTACULAR  
UNION  
SQUARE  
SUITES**

**166 GEARY STREET  
SAN FRANCISCO  
AT STOCKTON STREET**

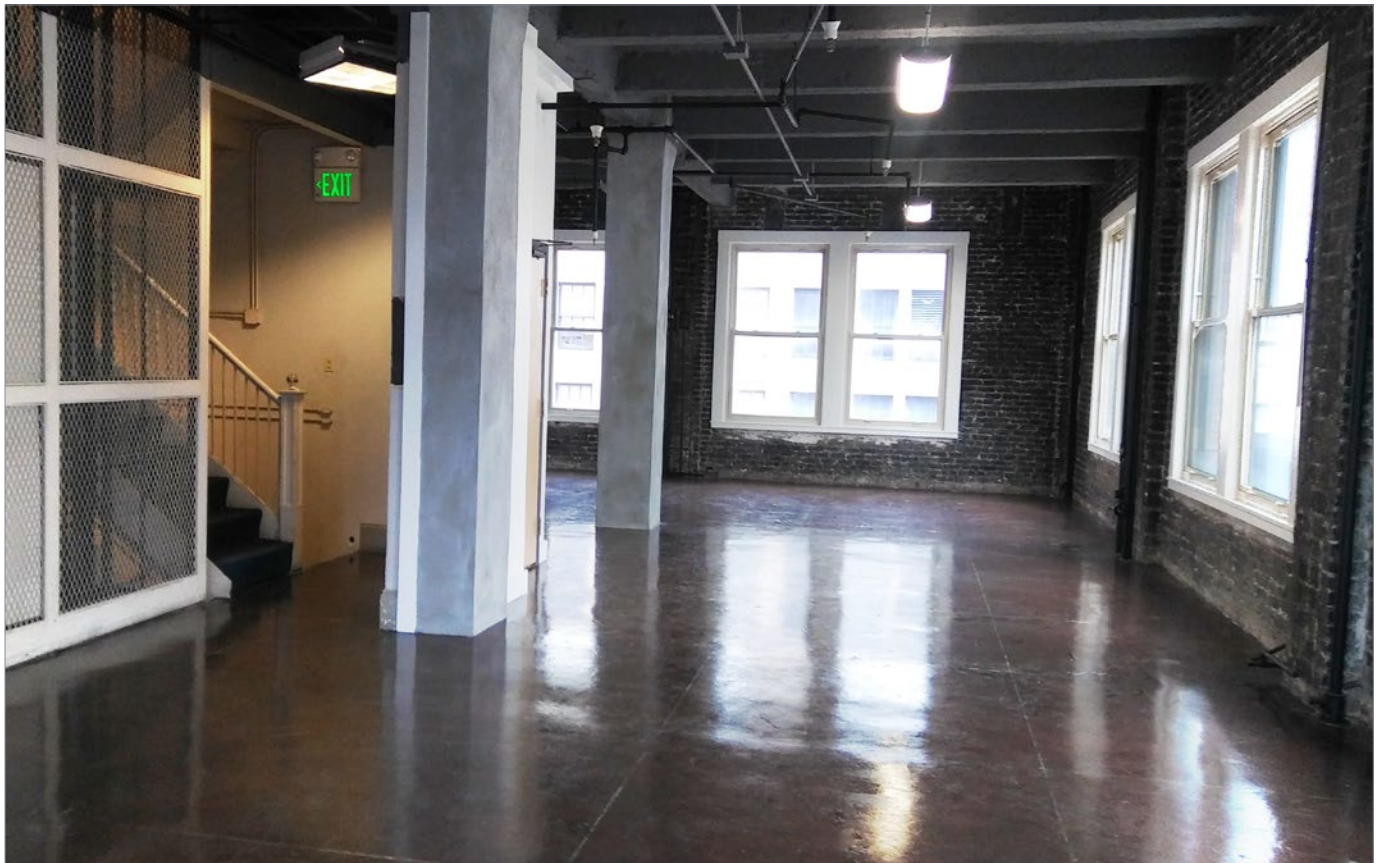
**BLATTEIS  
REALTY CO**

INCORPORATED | EST 1922



# 166 Geary Street

Interior Photos  
8th floor



**JEREMY BLATTEIS** • BRE# 01460566  
jfb@brsf.co • 415.321.7493

**GARY WARD** • BRE# 01208708  
gw@brsf.co • 415.321.7483

Blatteis Realty Co. • 44 Montgomery St. Suite 1288 • San Francisco, CA 94104 • blatteisrealty.com • (415) 981-2844 • BRE# 01421282

This statement with the information it contains, is given with the understanding that all negotiations relating to the purchase, renting or leasing of the property described above shall be conducted through this office. The above information, while not guaranteed, has been secured from sources believed to be reliable. We have not verified its accuracy and make no guarantee, warranty or representation regarding this information and it is published subject to the possibility of errors, omissions, changing of listing information including price, term, financing, or withdrawal without notice. We include projections, estimates, opinions, and/or assumptions, for example only, and they may not represent current or future performance of the property. You should consult your tax and legal advisors before to verify the validity of our estimates.



# 166 Geary Street

Interior Photos  
8th floor



**JEREMY BLATTEIS** • BRE# 01460566  
jfb@brsf.co • 415.321.7493

**GARY WARD** • BRE# 01208708  
gw@brsf.co • 415.321.7483

Blatteis Realty Co. • 44 Montgomery St. Suite 1288 • San Francisco, CA 94104 • blatteisrealty.com • (415) 981-2844 • BRE# 01421282

This statement with the information it contains, is given with the understanding that all negotiations relating to the purchase, renting or leasing of the property described above shall be conducted through this office. The above information, while not guaranteed, has been secured from sources believed to be reliable. We have not verified its accuracy and make no guarantee, warranty or representation regarding this information and it is published subject to the possibility of errors, omissions, changing of listing information including price, term, financing, or withdrawal without notice. We include projections, estimates, opinions, and/or assumptions, for example only, and they may not represent current or future performance of the property. You should consult your tax and legal advisors before to verify the validity of our estimates.



# 166 Geary Street

Conceptual Layout



**JEREMY BLATTEIS** • BRE# 01460566  
jfb@brsf.co • 415.321.7493  
**GARY WARD** • BRE# 01208708  
gw@brsf.co • 415.321.7483

Blatteis Realty Co. • 44 Montgomery St. Suite 1288 • San Francisco, CA 94104 • blatteisrealty.com • (415) 981-2844 • BRE# 01421282

This statement with the information it contains, is given with the understanding that all negotiations relating to the purchase, renting or leasing of the property described above shall be conducted through this office. The above information, while not guaranteed, has been secured from sources believed to be reliable. We have not verified its accuracy and make no guarantee, warranty or representation regarding this information and it is published subject to the possibility of errors, omissions, changing of listing information including price, term, financing, or withdrawal without notice. We include projections, estimates, opinions, and/or assumptions, for example only, and they may not represent current or future performance of the property. You should consult your tax and legal advisors before to verify the validity of our estimates.



# 166 Geary Street

Architectural  
Renderings



**JEREMY BLATTEIS** • BRE# 01460566  
jfb@brsf.co • 415.321.7493

**GARY WARD** • BRE# 01208708  
gw@brsf.co • 415.321.7483

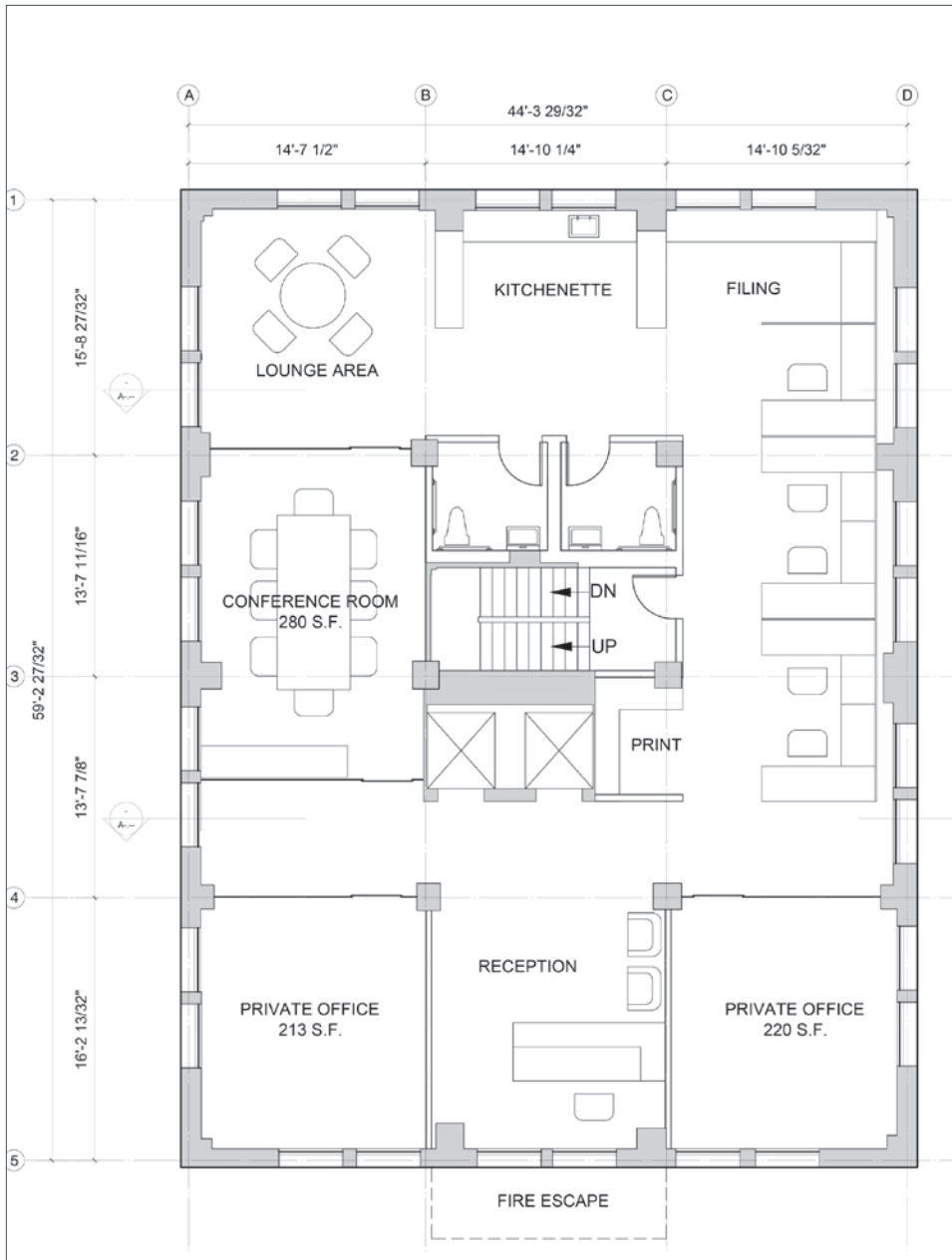
Blatteis Realty Co. • 44 Montgomery St. Suite 1288 • San Francisco, CA 94104 • blatteisrealty.com • (415) 981-2844 • BRE# 01421282

This statement with the information it contains, is given with the understanding that all negotiations relating to the purchase, renting or leasing of the property described above shall be conducted through this office. The above information, while not guaranteed, has been secured from sources believed to be reliable. We have not verified its accuracy and make no guarantee, warranty or representation regarding this information and it is published subject to the possibility of errors, omissions, changing of listing information including price, term, financing, or withdrawal without notice. We include projections, estimates, opinions, and/or assumptions, for example only, and they may not represent current or future performance of the property. You should consult your tax and legal advisors before to verify the validity of our estimates.

# 166 Geary Street

Conceptual Floor-Plan:  
8<sup>th</sup>, 9<sup>th</sup>, & 11<sup>th</sup> Floors

**Excellent Buildout Flexibility!**





# 166 Geary Street

Nearby Union Square Attractions!



★ macy's Dior



The Cheesecake Factory



TIFFANY & Co. Neiman Marcus

JEREMY BLATTEIS • BRE# 01460566  
jfb@brsf.com • 415.321.7493  
GARY WARD • BRE# 01208708  
gw@brsf.com • 415.321.7483

Blatteis Realty Co. • 44 Montgomery St. Suite 1288 • San Francisco, CA 94104 • blatteisrealty.com • (415) 981-2844 • BRE# 01421282

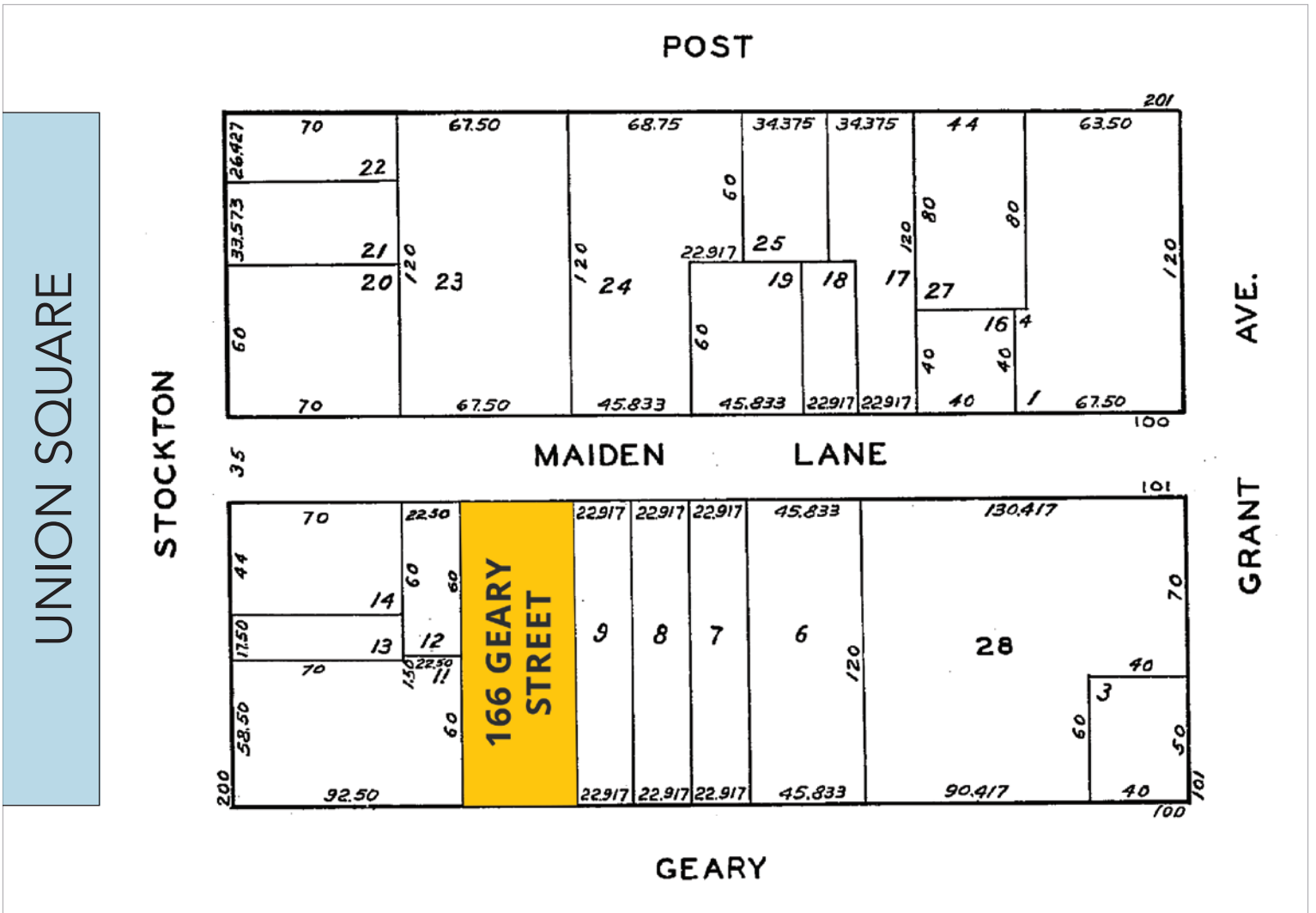
This statement with the information it contains, is given with the understanding that all negotiations relating to the purchase, renting or leasing of the property described above shall be conducted through this office. The above information, while not guaranteed, has been secured from sources believed to be reliable. We have not verified its accuracy and make no guarantee, warranty or representation regarding this information and it is published subject to the possibility of errors, omissions, changing of listing information including price, term, financing, or withdrawal without notice. We include projections, estimates, opinions, and/or assumptions, for example only, and they may not represent current or future performance of the property. You should consult your tax and legal advisors before to verify the validity of our estimates.

# 166 Geary Street

UNION SQUARE



Aerial View of Property



Parcel Map of Property

**JEREMY BLATTEIS** • BRE# 01460566

jfb@brsf.co • 415.321.7493

**GARY WARD** • BRE# 01208708

gw@brsf.co • 415.321.7483

Blatteis Realty Co. • 44 Montgomery St. Suite 1288 • San Francisco, CA 94104 • blatteisrealty.com • (415) 981-2844 • BRE# 01421282

This statement with the information it contains, is given with the understanding that all negotiations relating to the purchase, renting or leasing of the property described above shall be conducted through this office. The above information, while not guaranteed, has been secured from sources believed to be reliable. We have not verified its accuracy and make no guarantee, warranty or representation regarding this information and it is published subject to the possibility of errors, omissions, changing of listing information including price, term, financing, or withdrawal without notice. We include projections, estimates, opinions, and/or assumptions, for example only, and they may not represent current or future performance of the property. You should consult your tax and legal advisors before to verify the validity of our estimates.





# 166 Geary Street

HEART OF UNION SQUARE!



**JEREMY BLATTEIS** • BRE# 01460566

jfb@brsf.co • 415.321.7493

**GARY WARD** • BRE# 01208708

gw@brsf.co • 415.321.7483

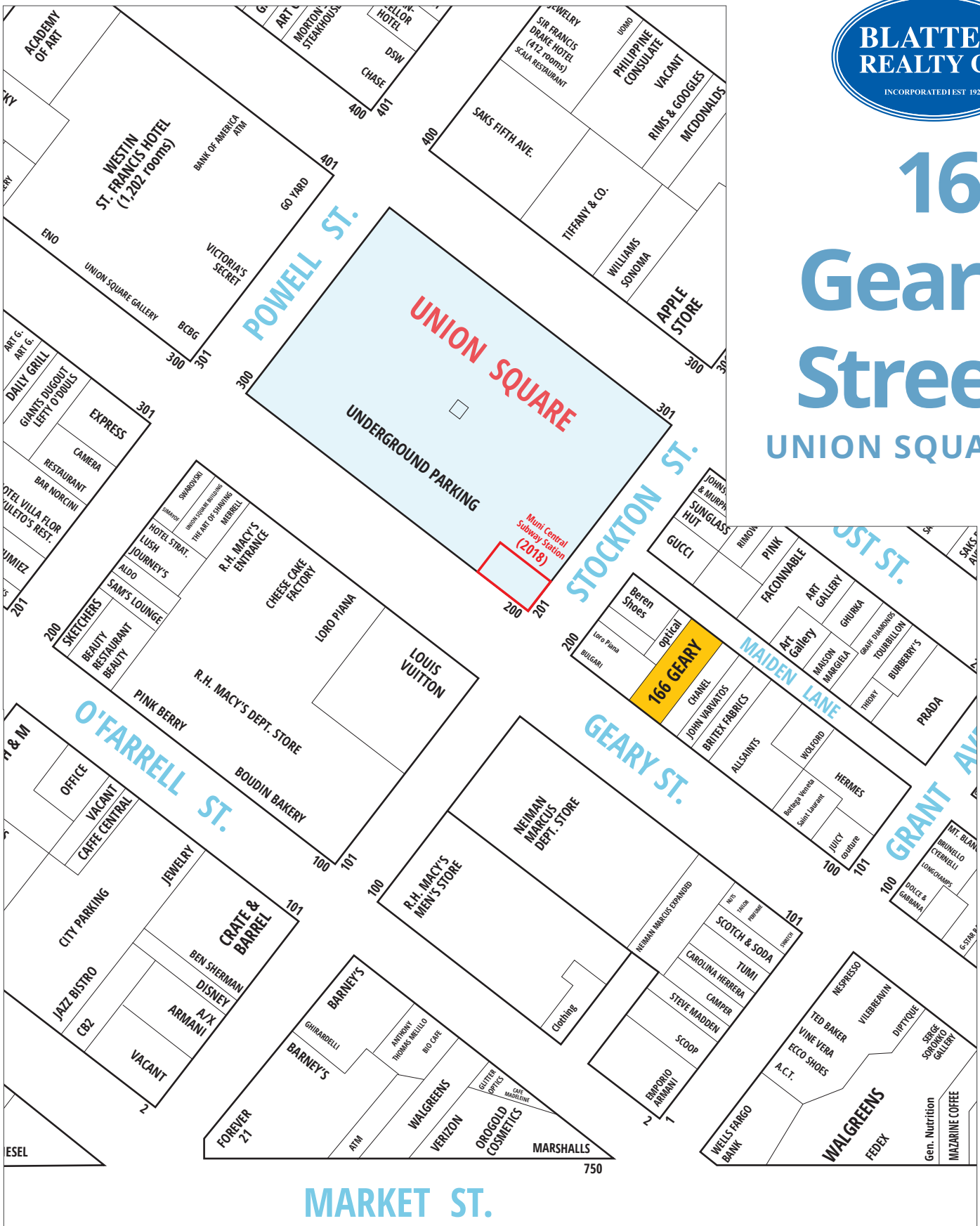
Blatteis Realty Co. • 44 Montgomery St. Suite 1288 • San Francisco, CA 94104 • [blatteisrealty.com](http://blatteisrealty.com) • (415) 981-2844 • BRE# 01421282

This statement with the information it contains, is given with the understanding that all negotiations relating to the purchase, renting or leasing of the property described above shall be conducted through this office. The above information, while not guaranteed, has been secured from sources believed to be reliable. We have not verified its accuracy and make no guarantee, warranty or representation regarding this information and it is published subject to the possibility of errors, omissions, changing of listing information including price, term, financing, or withdrawal without notice. We include projections, estimates, opinions, and/or assumptions, for example only, and they may not represent current or future performance of the property. You should consult your tax and legal advisors before to verify the validity of our estimates.



# 166 Geary Street

## UNION SQUARE



**JEREMY BLATTEIS** • BRE# 01460566  
jfb@brsf.com • 415.321.7493  
**GARY WARD** • BRE# 01208708  
gw@brsf.com • 415.321.7483

Blatteis Realty Co. • 44 Montgomery St. Suite 1288 • San Francisco, CA 94104 • blatteisrealty.com • (415) 981-2844 • BRE# 01421282

This statement with the information it contains, is given with the understanding that all negotiations relating to the purchase, renting or leasing of the property described above shall be conducted through this office. The above information, while not guaranteed, has been secured from sources believed to be reliable. We have not verified its accuracy and make no guarantee, warranty or representation regarding this information and it is published subject to the possibility of errors, omissions, changing of listing information including price, term, financing, or withdrawal without notice. We include projections, estimates, opinions, and/or assumptions, for example only, and they may not represent current or future performance of the property. You should consult your tax and legal advisors before to verify the validity of our estimates.