

FOR LEASE

199 Moulton Street San Francisco



**Office Space in the Heart
of the Marina District**

± 900 SF

Please Call for Price

**CONTACT David Blatteis
Sharon Kim**

415-321-7488 | db@brsf.co | BRE#:00418305
415-321-7491 | sk@brsf.co | BRE#:01865334

BLATTEIS REALTY CO. 44 Montgomery Street, Ste. 1288 | t: 415-981-2844 | f: 415-981-4986 | info@brsf.co | BRE#: 01421282 | www.sfretail.net

This statement with the information it contains, is given with the understanding that all negotiations relating to the purchase, renting or leasing of the property described above shall be conducted through this office. The above information, while not guaranteed, has been secured from sources believed to be reliable. We have not verified its accuracy and make no guarantee, warranty or representation regarding this information and it is published subject to the possibility of errors, omissions, changing of listing information including price, term, financing, or withdrawal without notice. We include projections, estimates, opinions, and/or assumptions, for example only, and they may not represent current or future performance of the property. You should consult your tax and legal advisors before to verify the validity of our estimates.



199 MOULTON STREET, SAN FRANCISCO

INTERIOR



CONTACT David Blatteis
Sharon Kim

415-321-7488 | db@brsf.co | BRE#:00418305
415-321-7491 | sk@brsf.co | BRE#:01865334

BLATTEIS REALTY CO. 44 Montgomery Street, Ste. 1288 | t: 415-981-2844 | f: 415-981-4986 | info@brsf.co | BRE#: 01421282 | www.sfretail.net

This statement with the information it contains, is given with the understanding that all negotiations relating to the purchase, renting or leasing of the property described above shall be conducted through this office. The above information, while not guaranteed, has been secured from sources believed to be reliable. We have not verified its accuracy and make no guarantee, warranty or representation regarding this information and it is published subject to the possibility of errors, omissions, changing of listing information including price, term, financing, or withdrawal without notice. We include projections, estimates, opinions, and/or assumptions, for example only, and they may not represent current or future performance of the property. You should consult your tax and legal advisors before to verify the validity of our estimates.

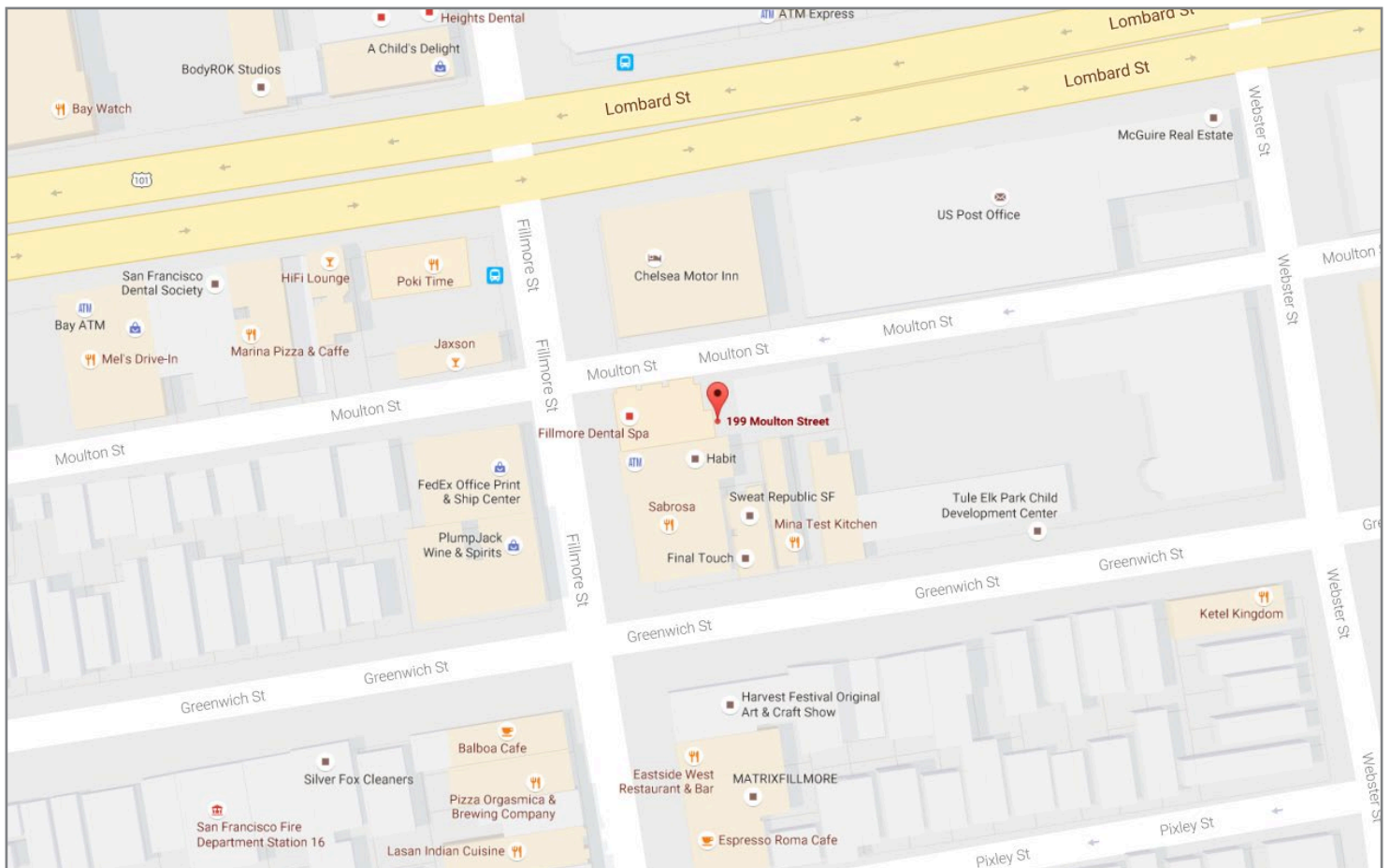


199 MOULTON STREET, SAN FRANCISCO

ABOUT

Located on Moulton Street, in the Golden Triangle and a highly populated area, this office space has high foot traffic in the block connecting prestigious Chestnut and Union Streets. Office space is across the street from a large public parking garage and the post office. Established businesses nearby include: Balboa Cafe, Fedex Office, American Apparel, See Optical, Nike, Soulcycle, Sephora, Lush, and many more.

MAP



CONTACT David Blatteis
Sharon Kim

415-321-7488 | db@brsf.co | BRE#:00418305
415-321-7491 | sk@brsf.co | BRE#:01865334

BLATTEIS REALTY CO. 44 Montgomery Street, Ste. 1288 | t: 415-981-2844 | f: 415-981-4986 | info@brsf.co | BRE#: 01421282 | www.sfretail.net

This statement with the information it contains, is given with the understanding that all negotiations relating to the purchase, renting or leasing of the property described above shall be conducted through this office. The above information, while not guaranteed, has been secured from sources believed to be reliable. We have not verified its accuracy and make no guarantee, warranty or representation regarding this information and it is published subject to the possibility of errors, omissions, changing of listing information including price, term, financing, or withdrawal without notice. We include projections, estimates, opinions, and/or assumptions, for example only, and they may not represent current or future performance of the property. You should consult your tax and legal advisors before to verify the validity of our estimates.

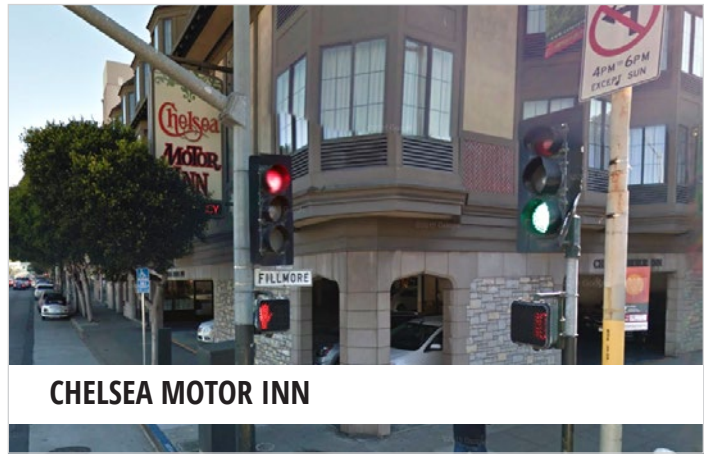


199 MOULTON STREET, SAN FRANCISCO

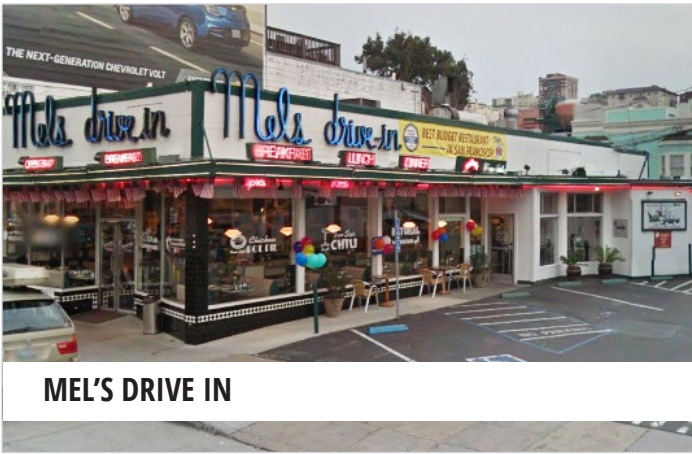
NEARBY



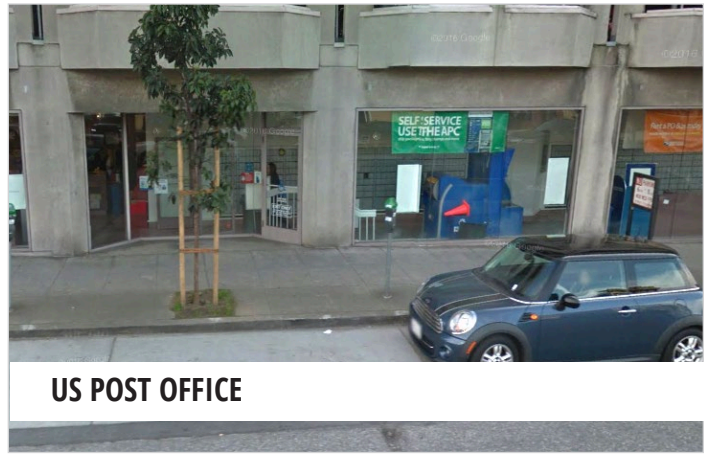
BALBOA CAFE



CHELSEA MOTOR INN



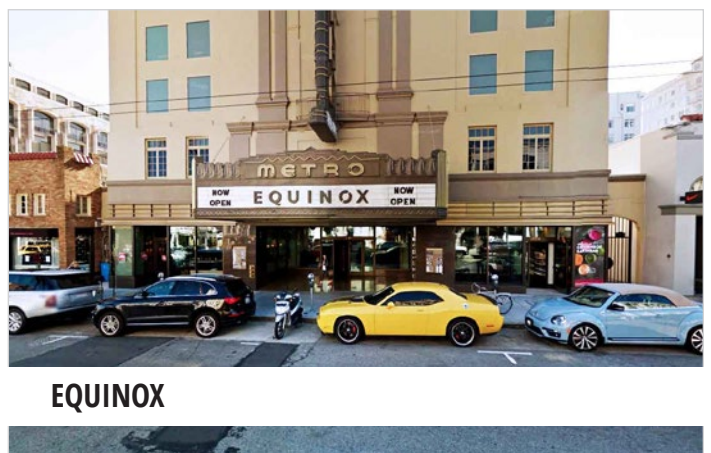
MEL'S DRIVE IN



US POST OFFICE



REAL FOOD COMPANY



EQUINOX

CONTACT David Blatteis
Sharon Kim

415-321-7488 | db@brsf.co | BRE#:00418305
415-321-7491 | sk@brsf.co | BRE#:01865334

BLATTEIS REALTY CO. 44 Montgomery Street, Ste. 1288 | t: 415-981-2844 | f: 415-981-4986 | info@brsf.co | BRE#: 01421282 | www.sfretail.net

This statement with the information it contains, is given with the understanding that all negotiations relating to the purchase, renting or leasing of the property described above shall be conducted through this office. The above information, while not guaranteed, has been secured from sources believed to be reliable. We have not verified its accuracy and make no guarantee, warranty or representation regarding this information and it is published subject to the possibility of errors, omissions, changing of listing information including price, term, financing, or withdrawal without notice. We include projections, estimates, opinions, and/or assumptions, for example only, and they may not represent current or future performance of the property. You should consult your tax and legal advisors before to verify the validity of our estimates.

