

FOR LEASE

1743 S. El Camino Real

San Mateo, CA



Ground Floor Retail/Office Space!

Bustling Location on the corner of S. El Camino Real and Hwy 92! This property offers superb visibility from Hwy 92 and El Camino and Superior signage, HIGH Ceilings, strong window lining, excellent signage potential, and 20 DEDICATED PARKING SPACES! The ground floor contains approximately 6,000 square feet but there is also potential to lease an additional 1,000 square feet. Suitable for a variety of retail and office uses. Starbucks, Safeway, Jack's Restaurant & Bar, 24 Hour Fitness are all located close by. Terrific Opportunity!

Please Call for Price
±6,000 SF

CONTACT **Jeremy Blatteis**
Sharon Kim

415-321-7493 | jfb@brsf.co | BRE#: 01460566
415-321-7491 | sk@brsf.co | BRE#: 01865334

BLATTEIS REALTY CO. 44 Montgomery Street, Ste. 1288 | t: 415-981-2844 | f: 415-981-4986 | info@brsf.co | BRE#: 01421282 | www.sfretail.net

This statement with the information it contains, is given with the understanding that all negotiations relating to the purchase, renting or leasing of the property described above shall be conducted through this office. The above information, while not guaranteed, has been secured from sources believed to be reliable. We have not verified its accuracy and make no guarantee, warranty or representation regarding this information and it is published subject to the possibility of errors, omissions, changing of listing information including price, term, financing, or withdrawal without notice. We include projections, estimates, opinions, and/or assumptions, for example only, and they may not represent current or future performance of the property. You should consult your tax and legal advisors before to verify the validity of our estimates.



1743 S. El Camino Real, San Mateo CA

INTERIOR



EXTERIOR



CONTACT **Jeremy Blatteis**
Sharon Kim

415-321-7493 | jfb@brsf.co | BRE#: 01460566
415-321-7491 | sk@brsf.co | BRE#: 01865334

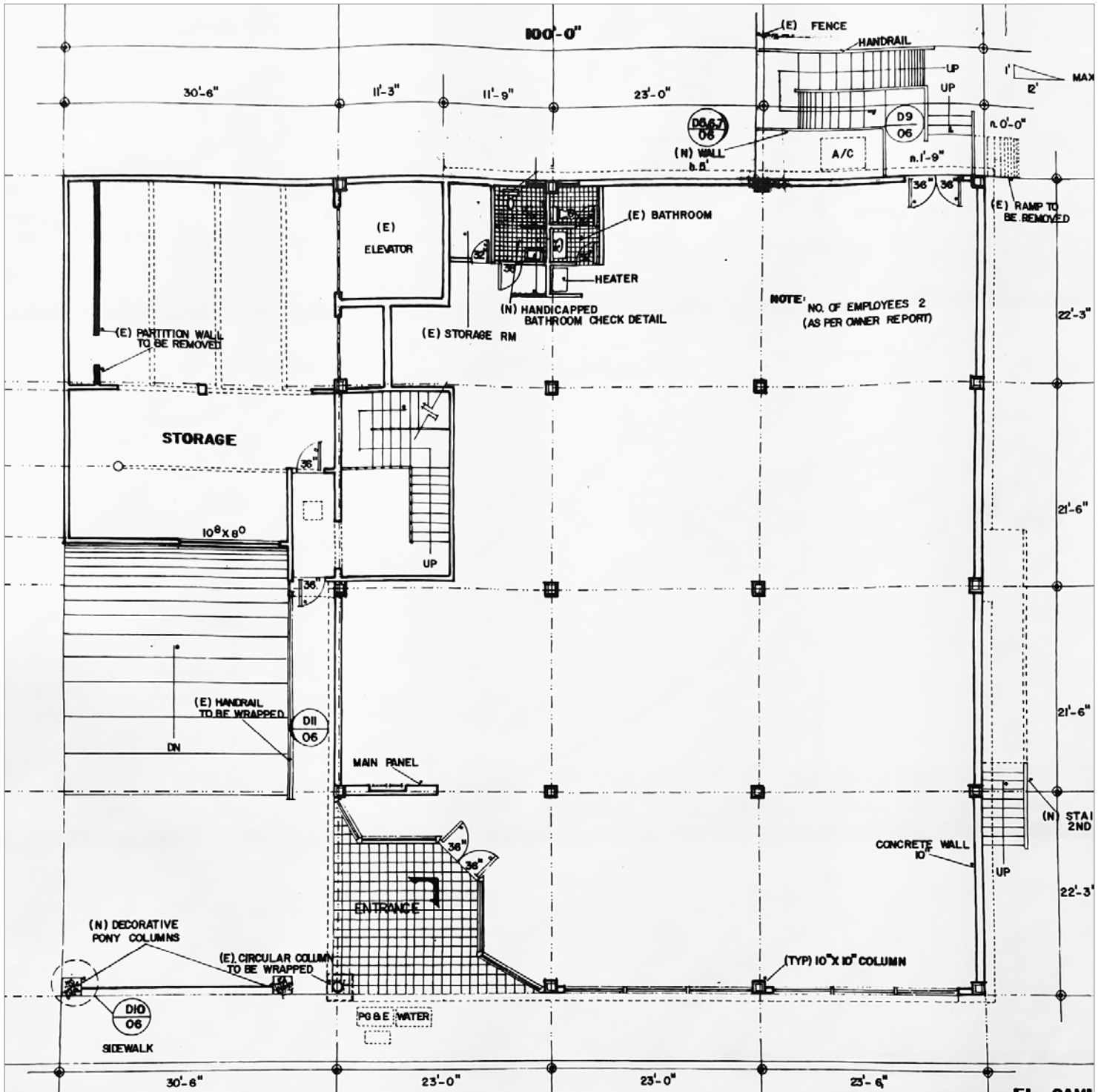
BLATTEIS REALTY CO. 44 Montgomery Street, Ste. 1288 | t: 415-981-2844 | f: 415-981-4986 | info@brsf.co | BRE#: 01421282 | www.sfretail.net

This statement with the information it contains, is given with the understanding that all negotiations relating to the purchase, renting or leasing of the property described above shall be conducted through this office. The above information, while not guaranteed, has been secured from sources believed to be reliable. We have not verified its accuracy and make no guarantee, warranty or representation regarding this information and it is published subject to the possibility of errors, omissions, changing of listing information including price, term, financing, or withdrawal without notice. We include projections, estimates, opinions, and/or assumptions, for example only, and they may not represent current or future performance of the property. You should consult your tax and legal advisors before to verify the validity of our estimates.



1743 S. El Camino Real, San Mateo CA

FLOORPLAN



CONTACT Jeremy Blatteis
Sharon Kim

415-321-7493 | jfb@brsf.co | BRE#: 01460566
415-321-7491 | sk@brsf.co | BRE#: 01865334

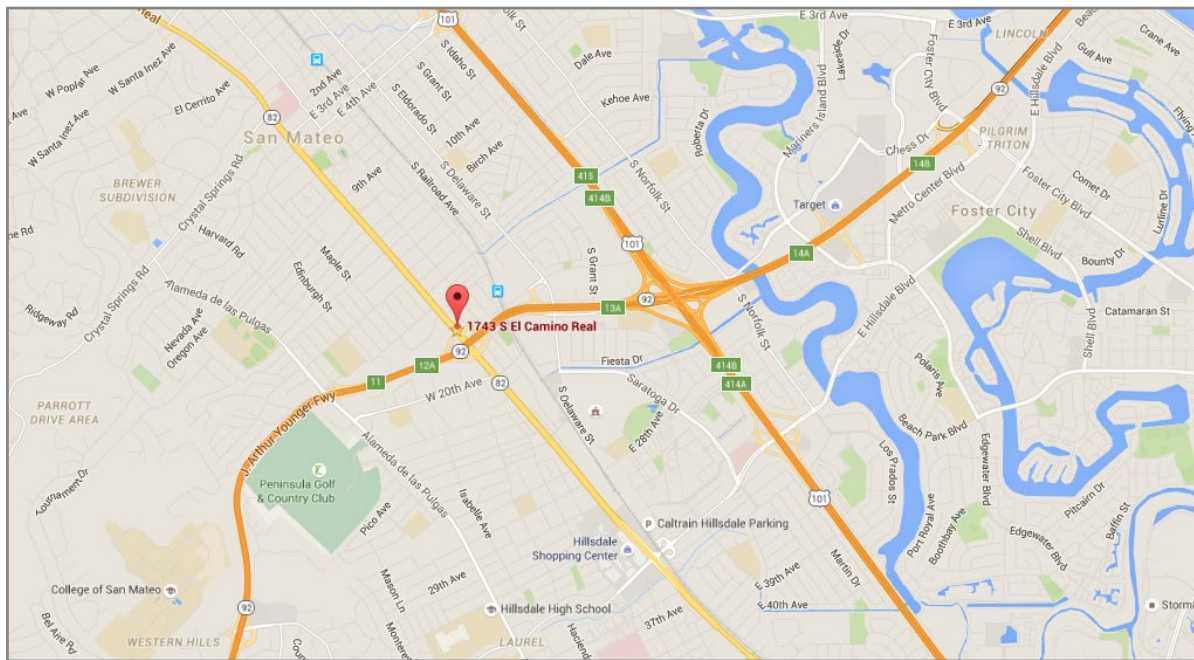
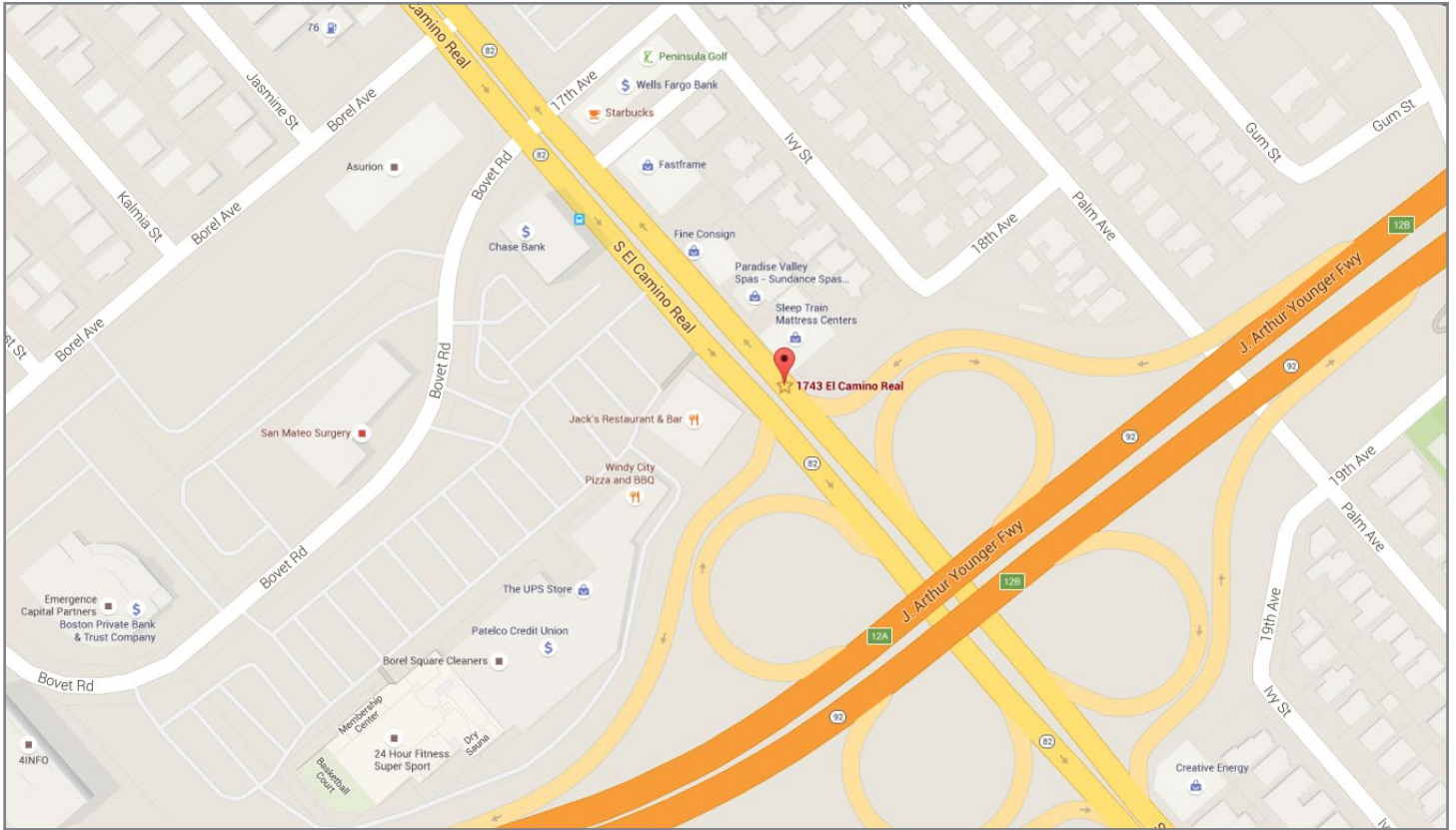
BLATTEIS REALTY CO. 44 Montgomery Street, Ste. 1288 | t: 415-981-2844 | f: 415-981-4986 | info@brsf.co | BRE#: 01421282 | www.sfretail.net

This statement with the information it contains, is given with the understanding that all negotiations relating to the purchase, renting or leasing of the property described above shall be conducted through this office. The above information, while not guaranteed, has been secured from sources believed to be reliable. We have not verified its accuracy and make no guarantee, warranty or representation regarding this information and it is published subject to the possibility of errors, omissions, changing of listing information including price, term, financing, or withdrawal without notice. We include projections, estimates, opinions, and/or assumptions, for example only, and they may not represent current or future performance of the property. You should consult your tax and legal advisors before to verify the validity of our estimates.



1743 S. El Camino Real, San Mateo CA

MAPS



CONTACT **Jeremy Blatteis**
Sharon Kim

415-321-7493 | jfb@brsf.co | BRE#: 01460566
415-321-7491 | sk@brsf.co | BRE#: 01865334

BLATTEIS REALTY CO. 44 Montgomery Street, Ste. 1288 | t: 415-981-2844 | f: 415-981-4986 | info@brsf.co | BRE#: 01421282 | www.sfretail.net

This statement with the information it contains, is given with the understanding that all negotiations relating to the purchase, renting or leasing of the property described above shall be conducted through this office. The above information, while not guaranteed, has been secured from sources believed to be reliable. We have not verified its accuracy and make no guarantee, warranty or representation regarding this information and it is published subject to the possibility of errors, omissions, changing of listing information including price, term, financing, or withdrawal without notice. We include projections, estimates, opinions, and/or assumptions, for example only, and they may not represent current or future performance of the property. You should consult your tax and legal advisors before to verify the validity of our estimates.

