

AVAILABLE

# 2240 Taraval Street San Francisco



## Rare Business Opportunity: Copper Kettle Café & Bakery



**CONTACT** Gary Ward 415-321-7483 | [gw@brsf.co](mailto:gw@brsf.co) | BRE#: 01208708

This statement with the information it contains, is given with the understanding that all negotiations relating to the purchase, renting or leasing of the property described above shall be conducted through this office. The above information, while not guaranteed, has been secured from sources believed to be reliable. We have not verified its accuracy and make no guarantee, warranty or representation regarding this information and it is published subject to the possibility of errors, omissions, changing of listing information including price, term, financing, or withdrawal without notice. We include projections, estimates, opinions, and/or assumptions, for example only, and they may not represent current or future performance of the property. You should consult your tax and legal advisors before to verify the validity of our estimates.

44 Montgomery Street, Ste. 1288  
t: 415-981-2844 | f: 415-981-4986  
[info@brsf.co](mailto:info@brsf.co) | BRE#: 01421282  
[www.sfretail.net](http://www.sfretail.net)

Interior

2240 Taraval Street

BLATTEIS  
REALTY CO

INCORPORATED 1922



**±2,500 SF**  
**Please Call For Quote**

## Highlights

- Rare Opportunity To Purchase Iconic **Copper Kettle Café & Bakery**
- Proudly Serving Western San Francisco For More Than A Decade
- Full Kitchen, Type 1 Hood, Fully Equipped With Ample Storage And Office Space
- Beer And Wine Licence
- Long Term Lease With Favorable Rent And Terms
- Key Money Quote Upon Request
- **Please Do Not Approach Employees**

Gary Ward 415-321-7483 | gw@brsf.co | BRE#: 01208708

This statement with the information it contains, is given with the understanding that all negotiations relating to the purchase, renting or leasing of the property described above shall be conducted through this office. The above information, while not guaranteed, has been secured from sources believed to be reliable. We have not verified its accuracy and make no guarantee, warranty or representation regarding this information and it is published subject to the possibility of errors, omissions, changing of listing information including price, term, financing, or withdrawal without notice. We include projections, estimates, opinions, and/or assumptions, for example only, and they may not represent current or future performance of the property. You should consult your tax and legal advisors before to verify the validity of our estimates.



Interior

2240 Taraval Street

**BLATTEIS  
REALTY CO**  
INCORPORATED 1922

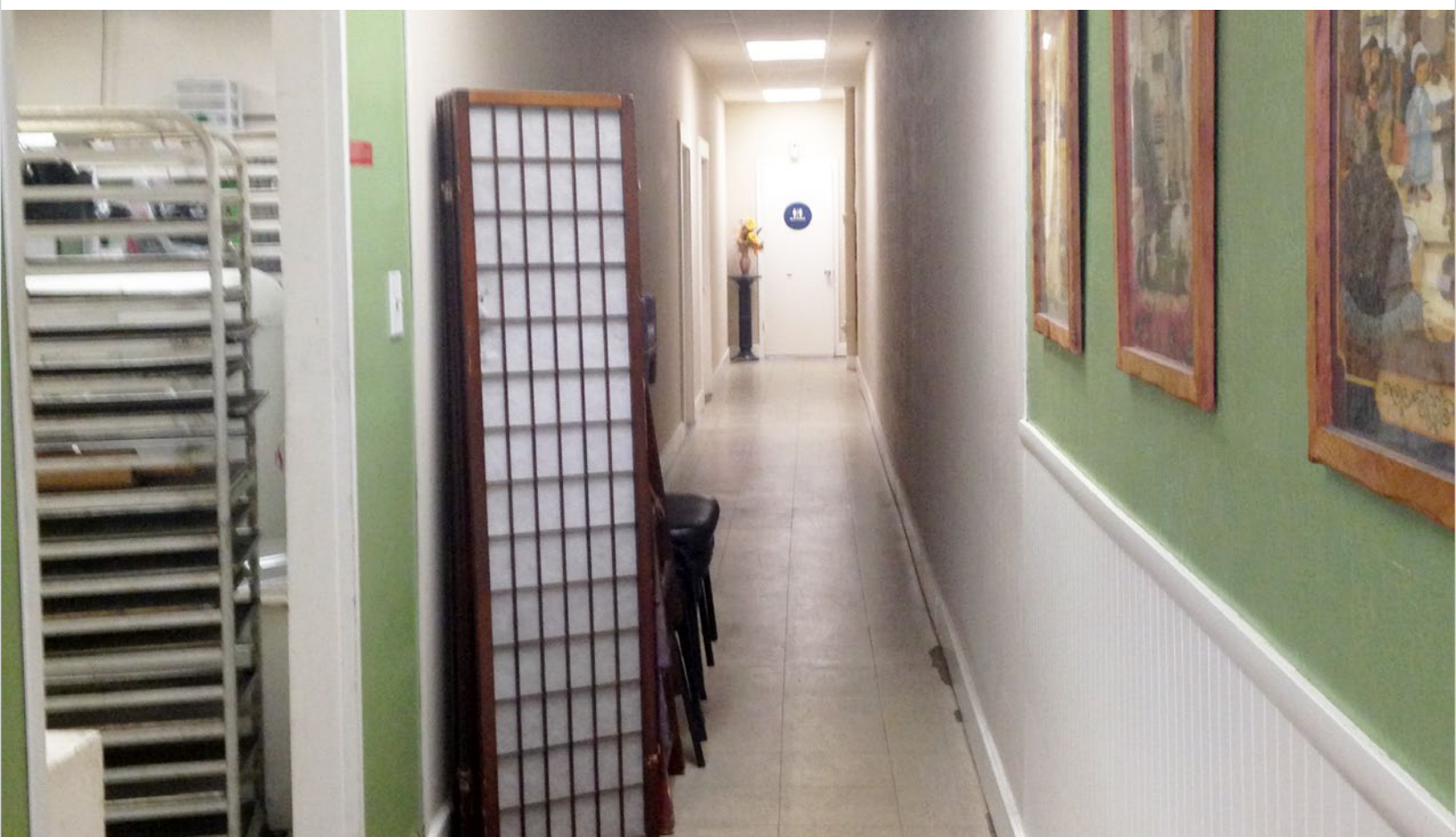


Gary Ward 415-321-7483 | gw@brsf.co | BRE#: 01208708

This statement with the information it contains, is given with the understanding that all negotiations relating to the purchase, renting or leasing of the property described above shall be conducted through this office. The above information, while not guaranteed, has been secured from sources believed to be reliable. We have not verified its accuracy and make no guarantee, warranty or representation regarding this information and it is published subject to the possibility of errors, omissions, changing of listing information including price, term, financing, or withdrawal without notice. We include projections, estimates, opinions, and/or assumptions, for example only, and they may not represent current or future performance of the property. You should consult your tax and legal advisors before to verify the validity of our estimates.

Interior

2240 Taraval Street



Gary Ward 415-321-7483 | gw@brsf.co | BRE#: 01208708

This statement with the information it contains, is given with the understanding that all negotiations relating to the purchase, renting or leasing of the property described above shall be conducted through this office. The above information, while not guaranteed, has been secured from sources believed to be reliable. We have not verified its accuracy and make no guarantee, warranty or representation regarding this information and it is published subject to the possibility of errors, omissions, changing of listing information including price, term, financing, or withdrawal without notice. We include projections, estimates, opinions, and/or assumptions, for example only, and they may not represent current or future performance of the property. You should consult your tax and legal advisors before to verify the validity of our estimates.

Interior

2240 Taraval Street

**BLATTEIS  
REALTY CO**  
INCORPORATED 1922



**Gary Ward** 415-321-7483 | [gw@brsf.co](mailto:gw@brsf.co) | BRE#: 01208708

This statement with the information it contains, is given with the understanding that all negotiations relating to the purchase, renting or leasing of the property described above shall be conducted through this office. The above information, while not guaranteed, has been secured from sources believed to be reliable. We have not verified its accuracy and make no guarantee, warranty or representation regarding this information and it is published subject to the possibility of errors, omissions, changing of listing information including price, term, financing, or withdrawal without notice. We include projections, estimates, opinions, and/or assumptions, for example only, and they may not represent current or future performance of the property. You should consult your tax and legal advisors before to verify the validity of our estimates.